

Weldcraft™ W-250 Series

Formerly WP-20 Series

Hand-Held Water-Cooled
TIG Welding Torches



Quick Specs

Models

W-250
W-250 Valve

Applications

Aerospace
Dairy
Food/beverage industry
Light and heavy manufacturing
Maintenance and repair

Petro/chemical
Precision fabrication
Shipbuilding
Tube and pipe
Vocational

Rated Output

DC: 250 A, AC: 180 A

Duty Cycle 100%

Electrode Range

.020–1/8 in. (0.5–3.2 mm)



W-250 Series TIG torches

Formerly known as the WP-20 Series, the W-250 Series water-cooled torches provide consistent performance and long-term trouble-free service with around-the-head water cooling.

Extend torch life and minimize downtime due to overheating with the efficient around-the-head cooling design.

Comfort and control are increased with the lightweight, compact body design.

Reduce leakage of gas and water through secure mechanical fittings and connections.

Easy hose replacement with the innovative mechanical fittings design (W-250 Valve).

Note: Torches delivered may vary slightly from images shown.



Miller Electric Mfg. LLC

An ITW Welding Company
1635 West Spencer Street
P.O. Box 1079
Appleton, WI 54912-1079 USA

Equipment Sales US and Canada

Phone: 866-931-9730
FAX: 800-637-2315
International Phone: 920-735-4554
International FAX: 920-735-4125

MillerWelds.com



Torch Packages

Models		Braided Rubber		Vinyl	
Old Model	New Name	12.5 ft. (3.8 m)	25 ft. (7.6 m)	12.5 ft. (3.8 m)	25 ft. (7.6 m)
WP-20	W-250	WP-20-12-R	WP-20-25-R	WP-20-12	WP-20-25
WP-20V	W-250 Valve	—	—	—	WP-20V-25

V = Valve

Torch packages include torch body, handle, power cable, long back cap, gas hose, and water hose.

Connectors

Power cable connectors



195377
50 mm Dinse-style with water return line for water-cooled torch.



195380
50 mm Dinse-style gas thru with gas and water return lines for water-cooled torch.



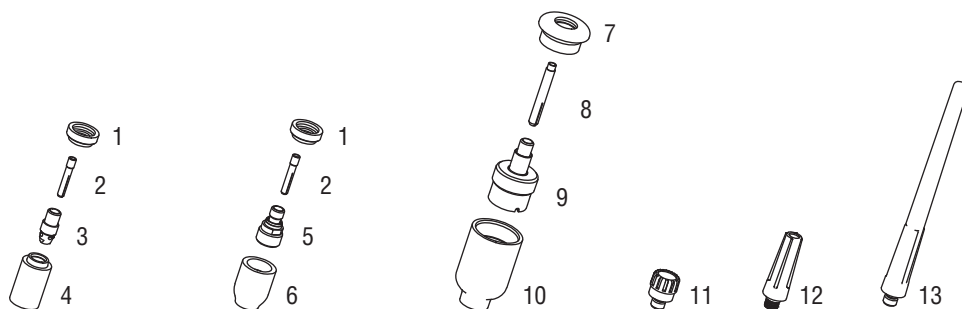
225028
50 mm thread-lock-style for water-cooled torch.



45V11
Power cable adapter for water-cooled torch.

Machines	Connection Type	1-Piece Power Cable Connectors
TIG Machines		
CST® 280 (Dinse)	50 mm Dinse-style	195377
Dynasty® 200/210/280/350/400	50 mm Dinse-style	195377
Dynasty® 700/800	50 mm thread-lock	225028
Maxstar® 200/210/280/350/400	50 mm Dinse-style	195377
Maxstar® 700/800	50 mm thread-lock	225028
Syncrowave® 200/210	50 mm Dinse-style gas thru	195380
Syncrowave® 250 DX/300/350 DX (Dinse)	50 mm Dinse-style	195377
Syncrowave® 250 DX/300/350 DX (stud)	1/2 in. stud	45V11
Multiprocess Machines		
Dimension™ 302/452/NT 450/650/652	1/2 in. stud	45V11
Dynasty® 280 DX Multiprocess	50 mm Dinse-style	195377
Multimatic® 255	50 mm Dinse-style	195377
PipeWorx	1/2 in. stud	45V11
XMT® 304/350	50 mm Dinse-style	195377
XMT® 450	1/2 in. stud	45V11
Engine-Driven Machines		
Most Big Blue®, Trailblazer®, Bobcat™, Blue Star® and Wildcat® models	1/2 in. stud	45V11
Big Blue® 450 Duo CST	50 mm Dinse-style	195377
General Reference		
	50 mm Dinse-style	195377
	50 mm Dinse-style gas thru	195380
	50 mm thread-lock	225028
	1/2 in. stud	45V11
Other Adapter		
	Stud to Dinse-style adapter	232728

Consumables (Refer to Owner's Manual for additional replacement parts.)



Non-Gas Lens

Electrode Size — inch (mm)	.040 (1.0)		1/16 (1.6)		3/32 (2.4)		1/8 (3.2)	
1 Insulator (required)	598882		598882		598882		598882	
2 Collet	13N21		13N22		13N23		13N24	
3 Collet Body	13N26		13N27		13N28		13N29	

Nozzle Size — size # (inch)	3 (3/16)	4 (1/4)	5 (5/16)	6 (3/8)	7 (7/16)	8 (1/2)	10 (5/8)	12 (3/4)	Short
4 Alumina	—	13N08	13N09	13N10	13N11	13N12	13N13	—	—
* Lava	—	13N14	13N15	13N16	13N17	—	13N19	—	—
* Long Lava	796F70	—	796F72	796F73	—	—	—	—	—
* X-Long Lava	796F74	796F75	—	796F77	—	—	—	—	—

Gas Lens

Electrode Size — inch (mm)	.040 (1.0)		1/16 (1.6)		3/32 (2.4)		1/8 (3.2)		
1 Insulator (required)	598882		598882		598882		598882		
2 Collet	13N21		13N22		13N23		13N24		
5 Gas Lens	45V42		45V43		45V44		45V45		
Nozzle Size — size # (inch)	3 (3/16)	4 (1/4)	5 (5/16)	6 (3/8)	7 (7/16)	8 (1/2)	10 (5/8)	12 (3/4)	Short
6 Alumina Gas Lens	—	53N58	53N59	53N60	53N61	53N61S	—	—	—

Large Diameter Gas Lens

Electrode Size — inch (mm)	.040 (1.0)		1/16 (1.6)		3/32 (2.4)		1/8 (3.2)		
7 Insulator (required)	54N63-20		54N63-20		54N63-20		54N63-20		
8 Collet	13N21L		13N22L		13N23L		13N24L		
9 Large Diameter Gas Lens	45V0204S		45V116S		45V64S		995795S		
Nozzle Size — size # (inch)	3 (3/16)	4 (1/4)	5 (5/16)	6 (3/8)	7 (7/16)	8 (1/2)	10 (5/8)	12 (3/4)	Short
10 Large Dia. Gas Lens	—	—	—	57N75	—	57N74	53N88	53N87	53N89
* Large Dia. Gas Lens-L	—	—	—	57N75L	—	57N74L	53N88L	53N87L	—
* Large Dia. Gas Lens-XL	—	—	—	57N75XL	—	57N74XL	53N88XL	53N87XL	—

Back Caps

11 Short 41V33	12 Medium 41V35	13 Long 41V24	* Back cap insulator 9-4
----------------	-----------------	---------------	--------------------------

*Not shown.