

# Weldcraft™ W-225 Pencil

## Formerly WP-20P

Hand-Held Water-Cooled  
TIG Welding Torches



### Quick Specs

**Model**  
W-225 Pencil

#### Applications

Aerospace  
Dairy  
Food/beverage industry  
Light and heavy manufacturing  
Maintenance and repair

Petro/chemical  
Precision fabrication  
Shipbuilding  
Tube and pipe  
Vocational

#### Rated Output

DC: 225 A, AC: 160 A

**Duty Cycle** 100%

#### Electrode Range

.020–1/8 in. (0.5–3.2 mm)

### W-225 Pencil TIG torch

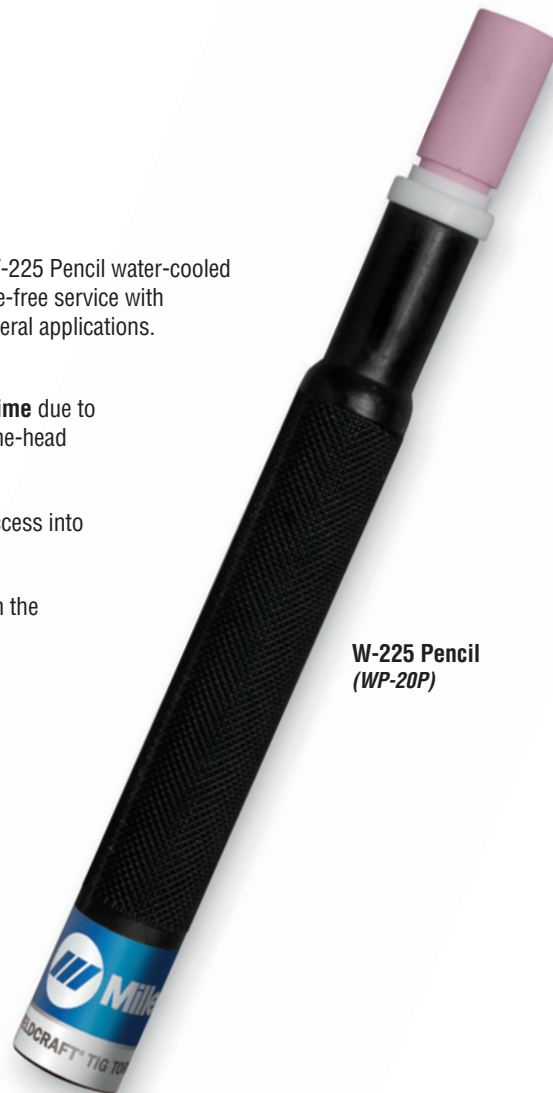
Formerly known as the WP-20P, the W-225 Pencil water-cooled torch is designed for long-term, trouble-free service with consistent welding performance in general applications.

**Extend torch life and minimize downtime** due to overheating with the efficient around-the-head cooling design.

**Pencil-style head** allows for greater access into hard-to-reach joints.

**Comfort and control** are increased with the lightweight, compact body design.

*Note: Torch delivered may vary slightly from image shown.*



W-225 Pencil  
(WP-20P)



**Miller Electric Mfg. Co.**  
An ITW Welding Company  
1635 West Spencer Street  
P.O. Box 1079  
Appleton, WI 54912-1079 USA

**Equipment Sales US and Canada**  
Phone: 866-931-9730  
FAX: 800-637-2315  
International Phone: 920-735-4554  
International FAX: 920-735-4125

**MillerWelds.com**  
f t y i n



## Torch Packages

Models		Vinyl	
Old Model	New Name	12.5 ft. (3.8 m)	25 ft. (7.6 m)
WP-20P	W-225 Pencil	WP-20P-12	WP-20P-25

P = Pencil

Torch packages include torch body, handle, power cable, gas hose, and water hose.

## Connectors

### Power cable connectors



**195380**  
50 mm Dinse-style gas thru with gas and water return lines for water-cooled torch.



**195377**  
50 mm Dinse-style with water return line for water-cooled torch.



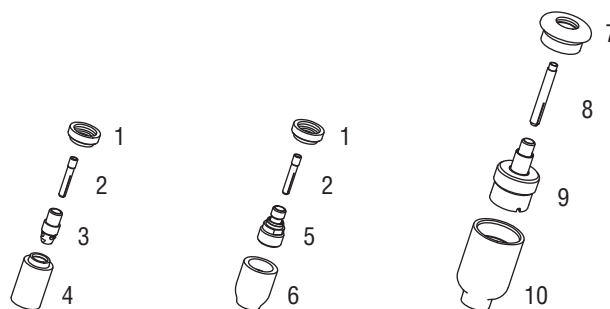
**45V11**  
Power cable adapter for water-cooled torch.



**225028**  
50 mm thread-lock-style for water-cooled torch.

Machines	Connection Type	1-Piece Power Cable Connectors
<b>TIG Machines</b>		
Syncrowave® 200/210	50 mm Dinse-style gas thru	<b>195380</b>
Syncrowave® 250 DX/350 DX (Dinse)	50 mm Dinse-style	<b>195377</b>
Syncrowave® 250 DX/350 DX (stud)	1/2 in. stud	<b>45V11</b>
Dynasty® 200/210/280/350, Maxstar® 200/210/280/350	50 mm Dinse-style	<b>195377</b>
Dynasty® 700, Maxstar® 700	50 mm thread-lock	<b>225028</b>
<b>Multiprocess Machines</b>		
Dimension™ 302/452/NT 450/652	1/2 in. stud	<b>45V11</b>
PipeWorx	1/2 in. stud	<b>45V11</b>
XMT® 304/350	50 mm Dinse-style	<b>195377</b>
XMT® 450	1/2 in. stud	<b>45V11</b>
<b>Engine-Driven Machines</b>		
Most Big Blue®, Trailblazer®, Bobcat™, Blue Star® and Wildcat® models	1/2 in. stud	<b>45V11</b>
Big Blue® 450 Duo CST	50 mm Dinse-style	<b>195377</b>
<b>General Reference</b>		
	50 mm Dinse-style	<b>195377</b>
	50 mm Dinse-style gas thru	<b>195380</b>
	50 mm thread-lock	<b>225028</b>
	1/2 in. stud	<b>45V11</b>
<b>Other Adapter</b>		
	Stud to Dinse-style adapter	<b>232728</b>

## Consumables (Refer to Owner's Manual for additional replacement parts.)



### Non-Gas Lens

Electrode Size — inch (mm)	.020 (0.5)		.040 (1.0)		1/16 (1.6)		3/32 (2.4)		1/8 (3.2)	
1 Insulator (required)	598882		598882		598882		598882		598882	
2 Collet	13N20		13N21		13N22		13N23		13N24	
3 Collet Body	13N25		13N26		13N27		13N28		13N29	
Nozzle Size — size # (inch)	3 (3/16)	4 (1/4)	5 (5/16)	6 (3/8)	7 (7/16)	8 (1/2)	10 (5/8)	12 (3/4)	Short	
4 Alumina	—	13N08	13N09	13N10	13N11	13N12	13N13	—	—	
* Lava	—	13N14	13N15	13N16	13N17	13N18	13N19	—	—	
* Long Lava	796F70	796F71	796F72	796F73	—	—	—	—	—	
* X-Long Lava	796F74	796F75	796F76	796F77	—	—	—	—	—	

### Gas Lens

Electrode Size — inch (mm)	.020 (0.5)		.040 (1.0)		1/16 (1.6)		3/32 (2.4)		1/8 (3.2)	
1 Insulator (required)	598882		598882		598882		598882		598882	
2 Collet	13N20		13N21		13N22		13N23		13N24	
5 Gas Lens	45V41		45V42		45V43		45V44		45V45	
Nozzle Size — size # (inch)	3 (3/16)	4 (1/4)	5 (5/16)	6 (3/8)	7 (7/16)	8 (1/2)	10 (5/8)	12 (3/4)	Short	
6 Alumina Gas Lens	—	53N58	53N59	53N60	53N61	53N61S	—	—	—	

### Large Diameter Gas Lens

Electrode Size — inch (mm)	.020 (0.5)		.040 (1.0)		1/16 (1.6)		3/32 (2.4)		1/8 (3.2)	
7 Insulator (required)	54N63-20		54N63-20		54N63-20		54N63-20		54N63-20	
8 Collet	13N20L		13N21L		13N22L		13N23L		13N24L	
9 Large Diameter Gas Lens	45V0204S		45V0204S		45V116S		45V64S		995795S	

Nozzle Size — size # (inch)	3 (3/16)	4 (1/4)	5 (5/16)	6 (3/8)	7 (7/16)	8 (1/2)	10 (5/8)	12 (3/4)	Short
10 Large Dia. Gas Lens	—	—	—	57N75	—	57N74	53N88	53N87	53N89
* Large Dia. Gas Lens-L	—	—	—	57N75L	—	57N74L	53N88L	53N87L	—
* Large Dia. Gas Lens-XL	—	—	—	57N75XL	—	57N74XL	53N88XL	53N87XL	—
* Large Dia. Gas Lens-XXL	—	—	—	57N75XXL	—	57N74XXL	53N88XXL	53N87XXL	—

\*Not shown.