

Weldcraft™ W-180

Formerly WP-24W

Hand-Held Water-Cooled
TIG Welding Torches



Quick Specs

Model
W-180

Applications

Aerospace
Food/beverage industry
Light and heavy manufacturing
Maintenance and repair

Petro/chemical
Precision fabrication
Shipbuilding

Rated Output

DC: 180 A, AC: 115 A

Duty Cycle 100%

Electrode Range

.020–3/32 in. (0.5–2.4 mm)

W-180 TIG torch

Formerly known as the WP-24W, the W-180 is one of the smallest water-cooled TIG torches on the market. The W-180 is designed for welding in confined areas that require high amperage with the use of a water-cooled system.

Use high amperage in confined areas for efficient welding.

Superior maneuverability in limited-access locations with the compact torch body.

Excellent weld capacity without increasing torch size, due to the efficient cooling system.

Comfort and control are increased with the light, well-balanced body design.

W-180
(WP-24W)

Note: Torch delivered may vary slightly from image shown.



Miller Electric Mfg. LLC

An ITW Welding Company
1635 West Spencer Street
P.O. Box 1079
Appleton, WI 54912-1079 USA

Equipment Sales US and Canada

Phone: 866-931-9730
FAX: 800-637-2315
International Phone: 920-735-4554
International FAX: 920-735-4125

MillerWelds.com



Torch Packages

Models		Braided Rubber	Vinyl
Old Model	New Name	25 ft. (7.6 m)	25 ft. (7.6 m)
WP-24W	W-180	WP-24W-25-R	WP-24W-25

Torch packages include torch body, handle, power cable, gas hose, water hose, and collet body wrench.

Connectors

Power cable connectors



195377
50 mm Dinse-style with water return line for water-cooled torch.



195380
50 mm Dinse-style gas thru with gas and water return lines for water-cooled torch.



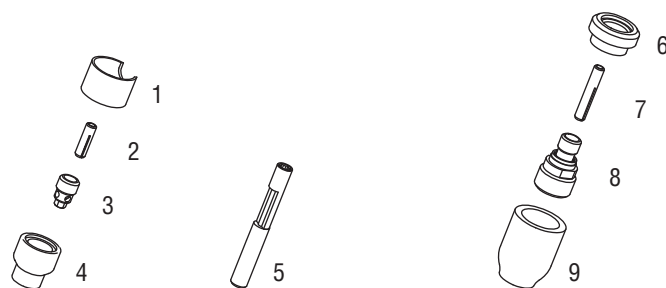
225028
50 mm thread-lock-style for water-cooled torch.



45V11
Power cable adapter for water-cooled torch.

Machines	Connection Type	1-Piece Power Cable Connectors
TIG Machines		
CST® 280 (Dinse)	50 mm Dinse-style	195377
Dynasty® 200/210/280/350/400	50 mm Dinse-style	195377
Dynasty® 700/800	50 mm thread-lock	225028
Maxstar® 200/210/280/350/400	50 mm Dinse-style	195377
Maxstar® 700/800	50 mm thread-lock	225028
Syncrowave® 200/210	50 mm Dinse-style gas thru	195380
Syncrowave® 250 DX/300/350 DX (Dinse)	50 mm Dinse-style	195377
Syncrowave® 250 DX/300/350 DX (stud)	1/2 in. stud	45V11
Multiprocess Machines		
Dimension™ 302/452/NT 450/650/652	1/2 in. stud	45V11
Dynasty® 280 DX Multiprocess	50 mm Dinse-style	195377
Multimatic® 255	50 mm Dinse-style	195377
PipeWorx	1/2 in. stud	45V11
XMT® 304/350	50 mm Dinse-style	195377
XMT® 450	1/2 in. stud	45V11
Engine-Driven Machines		
Most Big Blue®, Trailblazer®, Bobcat™, Blue Star® and Wildcat® models	1/2 in. stud	45V11
Big Blue® 450 Duo CST	50 mm Dinse-style	195377
General Reference		
	50 mm Dinse-style	195377
	50 mm Dinse-style gas thru	195380
	50 mm thread-lock	225028
	1/2 in. stud	45V11
Other Adapter		
	Stud to Dinse-style adapter	232728

Consumables (Refer to Owner's Manual for additional replacement parts.)



Non-Gas Lens

Electrode Size — inch (mm)	.040 (1.0)	1/16 (1.6)	3/32 (2.4)
1 Insulator (required)	53N22	53N22	53N22
2 Collet	53N16	53N14	24C332
3 Collet Body	53N18	53N19	24CB332
Nozzle Size — size # (inch)	4 (1/4)	5 (5/16)	6 (3/8)
4 Alumina	A53N24	A53N25	A53N27
* Lava	—	53N25	—

Collet Body Wrench

5 53N20

Gas Lens

Electrode Size — inch (mm)	.040 (1.0)	1/16 (1.6)			3/32 (2.4)
6 Insulator (required)	53N66	53N66			53N66
7 Collet	53N63	53N64			24GLC332
8 Gas Lens	45V42	45V43			45V44
Nozzle Size — size # (inch)	4 (1/4)	5 (5/16)	6 (3/8)	7 (7/16)	8 (1/2)
9 Alumina Gas Lens	53N58	53N59	53N60	53N61	53N61S

*Not shown.