

# Weldcraft™ W-280

## Formerly WP-280

Hand-Held Water-Cooled  
TIG Welding Torches



### Quick Specs

#### Model

W-280 Super Cool

#### Applications

Aerospace  
Aluminum fabrication  
Aluminum ship repair  
Automotive  
Exotic material fabrication  
Light and heavy manufacturing  
Maintenance and repair

Pipe and tube fabrication  
Precision metal fabrication  
Pressure vessel fabrication  
Shipbuilding  
Tool and die  
Tube and pipe  
Vocational

#### Rated Output

DC: 280 A, AC: 195 A

**Duty Cycle** 100%

#### Electrode Range

.020–1/8 in. (0.5–3.2 mm)

### W-280 Super Cool™ TIG torch

Formerly known as the WP-280, the W-280 Super Cool is a reliable water-cooled torch designed for demanding, high-amperage applications. The W-280 Super Cool is engineered with innovative technology and welding efficiency in mind.

**Super Cool technology** provides additional surface area to increase cooling efficiency and capacity.

**Reduce downtime** due to overheating through consistent water-cooled performance.

**Extend torch life** with dependable water-cooled technology.

**Reduce leakage** of gas and water through secure mechanical fittings and connections.

*Note: Torch delivered may vary slightly from image shown.*



W-280 Super Cool  
(301251)



#### Miller Electric Mfg. LLC

An ITW Welding Company  
1635 West Spencer Street  
P.O. Box 1079  
Appleton, WI 54912-1079 USA

#### Equipment Sales US and Canada

Phone: 866-931-9730  
FAX: 800-637-2315  
International Phone: 920-735-4554  
International FAX: 920-735-4125

#### MillerWelds.com



## Torch Packages

Models		Braided Rubber		Braided Rubber with 50 mm Dinse
Old Model	New Name	12.5 ft. (3.8 m)	25 ft. (7.6 m)	25 ft. (7.6 m)
WP-280	W-280 Super Cool™	301251012	301251025	301251001*

Torch packages include torch body, handle, power cable, gas hose, water hose, and long back cap.

\*Cable cover included.

## Connectors

### Power cable connectors



**195377**  
50 mm Dinse-style with water return line for water-cooled torch.



**195380**  
50 mm Dinse-style gas thru with gas and water return lines for water-cooled torch.



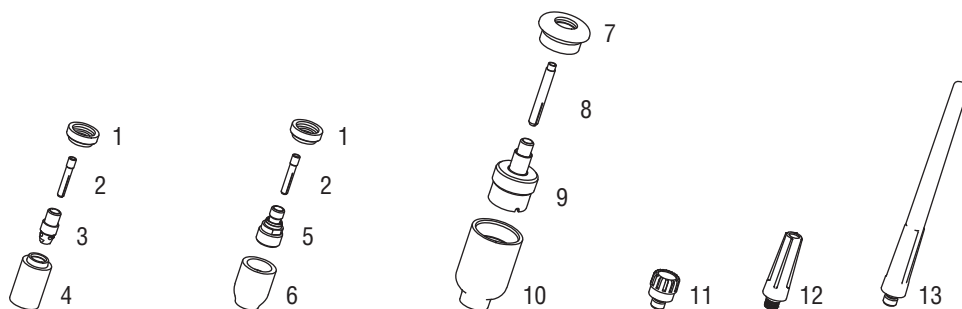
**225028**  
50 mm thread-lock-style for water-cooled torch.



**45V11**  
Power cable adapter for water-cooled torch.

Machines	Connection Type	1-Piece Power Cable Connectors
<b>TIG Machines</b>		
CST® 280 (Dinse)	50 mm Dinse-style	<b>195377</b>
Dynasty® 200/210/280/350/400	50 mm Dinse-style	<b>195377</b>
Dynasty® 700/800	50 mm thread-lock	<b>225028</b>
Maxstar® 200/210/280/350/400	50 mm Dinse-style	<b>195377</b>
Maxstar® 700/800	50 mm thread-lock	<b>225028</b>
Syncrowave® 200/210	50 mm Dinse-style gas thru	<b>195380</b>
Syncrowave® 250 DX/300/350 DX (Dinse)	50 mm Dinse-style	<b>195377</b>
Syncrowave® 250 DX/300/350 DX (stud)	1/2 in. stud	<b>45V11</b>
<b>Multiprocess Machines</b>		
Dimension™ 302/452/NT 450/650/652	1/2 in. stud	<b>45V11</b>
Dynasty® 280 DX Multiprocess	50 mm Dinse-style	<b>195377</b>
Multimatic® 255	50 mm Dinse-style	<b>195377</b>
PipeWorx	1/2 in. stud	<b>45V11</b>
XMT® 304/350	50 mm Dinse-style	<b>195377</b>
XMT® 450	1/2 in. stud	<b>45V11</b>
<b>Engine-Driven Machines</b>		
Most Big Blue®, Trailblazer®, Bobcat™, Blue Star® and Wildcat® models	1/2 in. stud	<b>45V11</b>
Big Blue® 450 Duo CST	50 mm Dinse-style	<b>195377</b>
<b>General Reference</b>		
	50 mm Dinse-style	<b>195377</b>
	50 mm Dinse-style gas thru	<b>195380</b>
	50 mm thread-lock	<b>225028</b>
	1/2 in. stud	<b>45V11</b>
<b>Other Adapter</b>		
	Stud to Dinse-style adapter	<b>232728</b>

## Consumables (Refer to Owner's Manual for additional replacement parts.)



### Non-Gas Lens

Electrode Size — inch (mm)	.040 (1.0)		1/16 (1.6)		3/32 (2.4)		1/8 (3.2)		
1 Insulator (required)	598882		598882		598882		598882		
2 Collet	13N21		13N22		13N23		13N24		
3 Collet Body	13N26		13N27		13N28		13N29		
Nozzle Size — size # (inch)	3 (3/16)	4 (1/4)	5 (5/16)	6 (3/8)	7 (7/16)	8 (1/2)	10 (5/8)	12 (3/4)	Short
4 Alumina	—	13N08	13N09	13N10	13N11	13N12	13N13	—	—
* Lava	—	13N14	13N15	13N16	13N17	—	13N19	—	—
* Long Lava	796F70	—	796F72	796F73	—	—	—	—	—
* X-Long Lava	796F74	796F75	—	796F77	—	—	—	—	—

### Gas Lens

Electrode Size — inch (mm)	.040 (1.0)		1/16 (1.6)		3/32 (2.4)		1/8 (3.2)		
1 Insulator (required)	598882		598882		598882		598882		
2 Collet	13N21		13N22		13N23		13N24		
5 Gas Lens	45V42		45V43		45V44		45V45		
Nozzle Size — size # (inch)	3 (3/16)	4 (1/4)	5 (5/16)	6 (3/8)	7 (7/16)	8 (1/2)	10 (5/8)	12 (3/4)	Short
6 Alumina Gas Lens	—	53N58	53N59	53N60	53N61	53N61S	—	—	—

### Large Diameter Gas Lens

Electrode Size — inch (mm)	.040 (1.0)		1/16 (1.6)		3/32 (2.4)		1/8 (3.2)		
7 Insulator (required)	54N63-20		54N63-20		54N63-20		54N63-20		
8 Collet	13N21L		13N22L		13N23L		13N24L		
9 Large Diameter Gas Lens	45V0204S		45V116S		45V64S		995795S		
Nozzle Size — size # (inch)	3 (3/16)	4 (1/4)	5 (5/16)	6 (3/8)	7 (7/16)	8 (1/2)	10 (5/8)	12 (3/4)	Short
10 Large Dia. Gas Lens	—	—	—	57N75	—	57N74	53N88	53N87	53N89
* Large Dia. Gas Lens-L	—	—	—	57N75L	—	57N74L	53N88L	53N87L	—
* Large Dia. Gas Lens-XL	—	—	—	57N75XL	—	57N74XL	53N88XL	53N87XL	—

### Back Caps

11 Short 41V33      12 Medium 41V35      13 Long 41V24

\*Not shown.